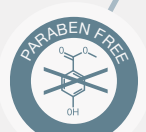


Key benefits

- » Gently unfolds the urethra
- » Excellent and long-lasting lubrication properties
- » Protects against injuries
- » Antiseptic action*
- » Local anaesthetic action**
- » High viscosity, no flow back from urethra***
- » Free of parabens, PVC and latex
- » Single hand use

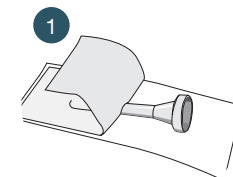


* Cathejell products with Chlorhexidine
 ** Cathejell products with Lidocaine
 *** Montavit, internal data on file

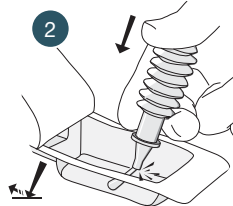
Application of Cathejell

All Cathejell versions are perfectly suited for the operating theatre and the doctor's office

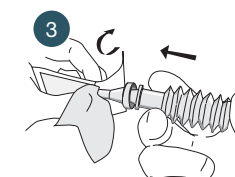
Attach the applicator tip



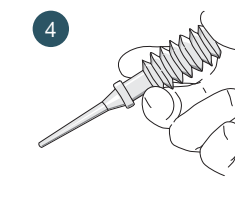
1 Open blister by peeling back the paper



2 Break off the snap-off tip onto sterile field

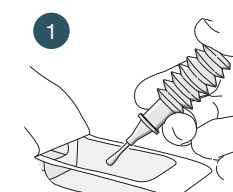


3 Attach the Cannula onto the accordion syringe

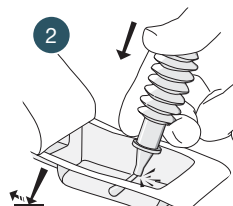


4 Ready to use

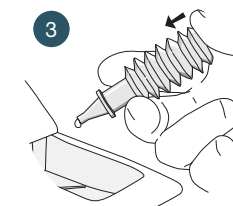
Instillation into the urethra



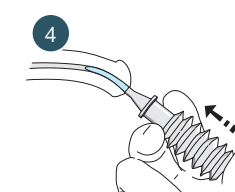
1 Open blister pack by peeling back the paper



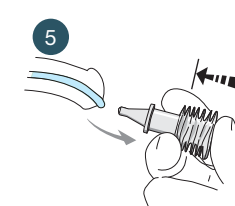
2 Break off the snap-off tip onto sterile field



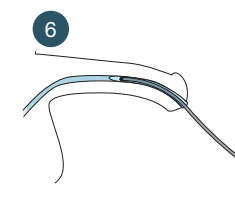
3 Squeeze out one drop of gel with gentle pressure



4 Insert the applicator nozzle into the meatus and instill slowly



5 Empty the accordion syringe completely and remove it



6 Introduce the catheter



042018/01091



SIMPLY CLEVER SINGLE HAND USE

Cathejell

Sterile & clear lubricant gel



Cathejell Mono

Cathejell C

Cathejell Lidocain C

Cathejell Lidocain



Exclusive Sole Agent in Lebanon:
Mediterranean Pharmaceutical Company
 Airport Road, Al Kital Street, Beirut - Lebanon
 Tel. 44 55 54 1 961+ - Fax. 45 54 54 1 961+
 Website: www.mpc-pharma.com

Pharmazeutische Fabrik Montavit Ges.m.b.H.
 Salzbergstraße 96 | A6067- Absam
 Tel + 57926 5223 43 | Fax + 11 57926 5223 43
 pharma@montavit.com | www.montavit.com

Cathejell products

Cathejell Lidocain C
Lubricant + anaesthetic + antiseptic
Lidocaine and Chlorhexidine
Medical device class III

Cathejell Lidocain
Lubricant + anaesthetic
Lidocaine
Medical device class III

Cathejell C
Lubricant + antiseptic
Chlorhexidine
Medical device class III

Cathejell Mono
Lubricant
Plain lubricant gel
Medical device class IIa

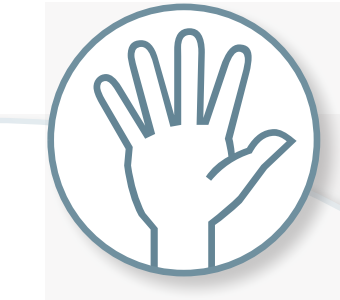
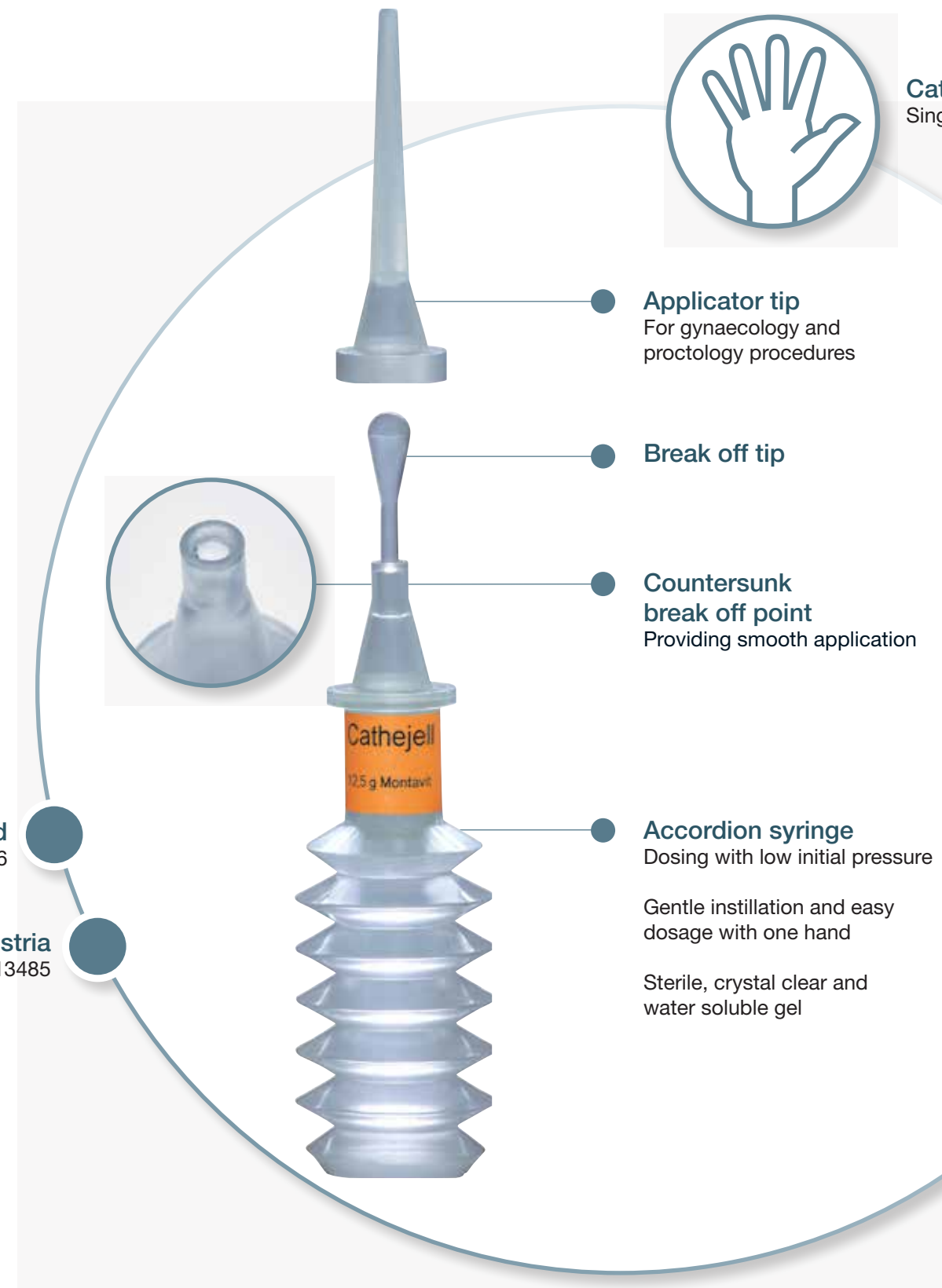
First steam sterilised
single use catheter lubricant worldwide since 1986

Production in Austria
in compliance with ISO 13485



All Cathejell versions

- » Are available in 12.5 g and 8.5 g syringes for single use
- » Can be prolonged by sterile applicator tip (Cannula)



Cathejell design
Single hand use and soft instillation

Applicator tip
For gynaecology and proctology procedures

Break off tip

Countersunk break off point
Providing smooth application

Accordion syringe
Dosing with low initial pressure

Gentle instillation and easy dosage with one hand

Sterile, crystal clear and water soluble gel

	Cathejell Lidocain C	Cathejell Lidocain	Cathejell C	Cathejell Mono
Contents (1 g gel contains)	Sterile, water-soluble, clear lubricant gel 20 mg Lidocaine Hydrochloride, 0.5 mg Chlorhexidine Dihydrochloride	Sterile, water-soluble, clear lubricant gel 20 mg Lidocaine Hydrochloride	Sterile, water-soluble, clear lubricant gel 0.5 mg Chlorhexidine Dihydrochlorid	Sterile, water-soluble, clear lubricant gel Plain sterile gel
Indications	Lubricant for » Catheters » Endoscopes » Probes » Tubes » Tracheal intubation » Other medical instruments	Lubricant for » Catheters » Endoscopes » Probes » Tubes » Tracheal intubation » Other medical instruments	Urethral lubricant for » Catheters » Endoscopes » Probes » Tubes » Other medical instruments	Lubricant for » Catheters » Endoscopes » Probes » Tubes » Tracheal intubation » Other medical instruments
Anaesthetic	+	+		
Antiseptic	+		+	
Clear for instruments	+	+	+	+
Lubricating	+	+	+	+
Prevention of infections	+		+	
Sterilisation procedure	°121 C steam sterilised			
Packages	1 x 12.5 g 5 x 12.5 g 25 x 12.5 g 1 x 8.5 g * 5 x 8.5 g 25 x 8.5 g *available only for Cathejell Lidocain and Cathejell C			
Available accessory	Cathejell Cannula - Sterile applicator tip			
	Medical device class III	Medical device class III	Medical device class III	Medical device class IIa
	Adults, adolescents and children over 2 years	Adults, adolescents and children over 2 years	Doctor should be consulted for children under 5 years	No age restrictions
Do not use Cathejell in the eyes, middle ear or wounds.				