

Nictur[®]

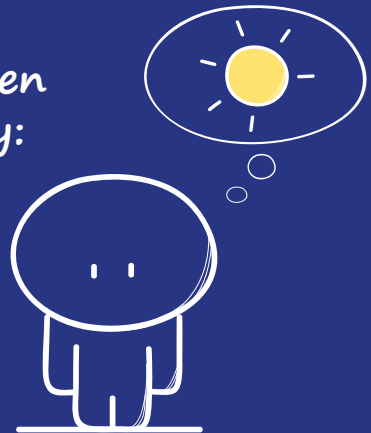
360 micrograms / ml

Desmopressin

Innovation in Enuresis Treatment
"The only licensed oral solution"

*To treat Enuresis in children
and adolescents caused by:*

-  *Primary Nocturnal Enuresis*
-  *Central Diabetes Insipidus*



The prevalence of Enuresis (OMS, NICE)^{1,2}:

- 💧 **16% Population older than 5 years**
- 💧 **1-3% Teenagers and adults**
- 💧 **Higher incidence in males**

Enuresis has a negative emotional impact on the child's environment^{3,4}

- 💧 **30% of the children who don't respond, is due to low adherence to treatment⁵**
- 💧 **A high rate of relapse if not gradually withdrawn⁶**



1. World Health Organization. The ICD-10 Classification of Mental and Behavioral Disorders: Diagnostic Criteria for Research. Geneva: WHO 1993. y los de la Sociedad Internacional de Continencia de los Niños (ICSS)

2. Neveus T, von Gontard A, Hobeke et al. The standardization of terminology of lower urinary tract function in children and adolescents : report from the Standardisation Committee of the International Children's. J Urol 2006; 176: 314-24

3. National Clinical Guideline Center (2010). Nocturnal enuresis: the management of bedwetting in children and young people. London: National Clinical Guideline Center. Disponible en: [www.nice.org.uk].

4. Sociedad Española de Pediatría Extrahospitalaria y Atención Primaria [Acceso Febrero 2019]. Manejo y diagnóstico terapéutico de la enuresis infantil. Disponible en: <https://www.sepeap.org/wp-content/uploads/2014/09/ENURESISINFANTIL.pdf>.

5. Vande Walle J, Rittig S, Bauer S. et al. I Eur J Pediatrics (2012) 171:971.

6. Chua ME, Silangcruz JN, Chang S, et al. Desmopressin withdrawal strategy for pediatric enuresis: a meta-analysis. Pediatrics 2016; 138(1):e20160495.

Nictur[®] provides a solution for Enuresis



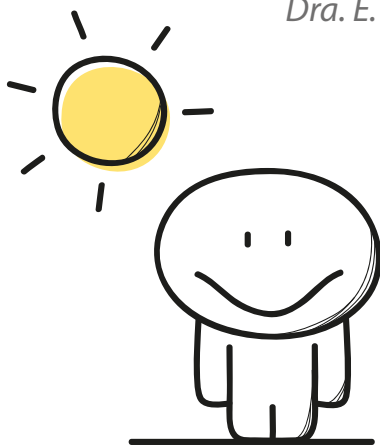
- 💧 **Fast onset of action with an excellent efficacy & safety⁷**
- 💧 **Personalized treatment per patient (dose adaptability)**
- 💧 **Facilitates gradual implementation of treatment until minimum effective dose⁸**
- 💧 **Easier gradual withdrawal to avoid unneeded relapse**
- 💧 **No need for fluid intake**
- 💧 **A consensus for the use of Nictur[®] in routine clinical practice, generated by Enuresis Experts.**

Dr. J.E. Batista

Dra. A. Bujons

Dra. I. Diaz

Dra. E. Llorens





7. Gambús G, Sanahuja R, Guerrero S, Nieto C, Puentes M, Ballester MR, Martínez J, Antonijoan R. A new desmopressin oral solution: a randomized, single-dose, openlabel, 2-way crossover bioequivalence study. 30th ESPU congress April 2019; Abstract S20-1:oral communication.

8. Glazener CMA, Evans JHC. Desmopresina para la enuresis nocturna en niños(Revisión Cochrane traducida). En: la Biblioteca CochranePlus2007, Número 3.

Taking things different can change everything



NICTUR® Oral solution 360 mcg / ml	Desmopressin lyophilized tablet
	
1 ml (360 mcg)	2 tablets of 120 mcg -
0,9 ml (324 mcg)	-
0,8 ml (288 mcg)	-
0,7 ml (252 mcg)	-
0,6 ml (216 mcg)	1 tablet of 120 mcg -
0,5ml (180 mcg)	-
0,4 ml (144 mcg)	-
0,3 ml (108 mcg)	-
0,2 ml (72 mcg)	-
0,1 ml (36 mcg)	-

New oral formulation protected by patency
in more than 30 countries⁹

15 ml bottle

1.5 ml marked syringe (0.25 - 0.5 - 1 - 1.5)

Dosing (ml)	Bed Wetting	Central diabetes insipidus
Initial	0.5 ml (180µg) *	0.25 ml (90µg)/tds
Titration	0.5 ml - 1 ml (180-360µg)	0.5 ml - 3 ml (180-1080µg)/tds
Maintenance	1 ml (360µg) **	0.25 ml - 0.5 ml (90-180µg)/tds

Elderly patients: Na⁺ level should be monitored before and 3 days after initiating of the treatment

* 1hr before bed time

** For 3 months with 1 week free treatment period